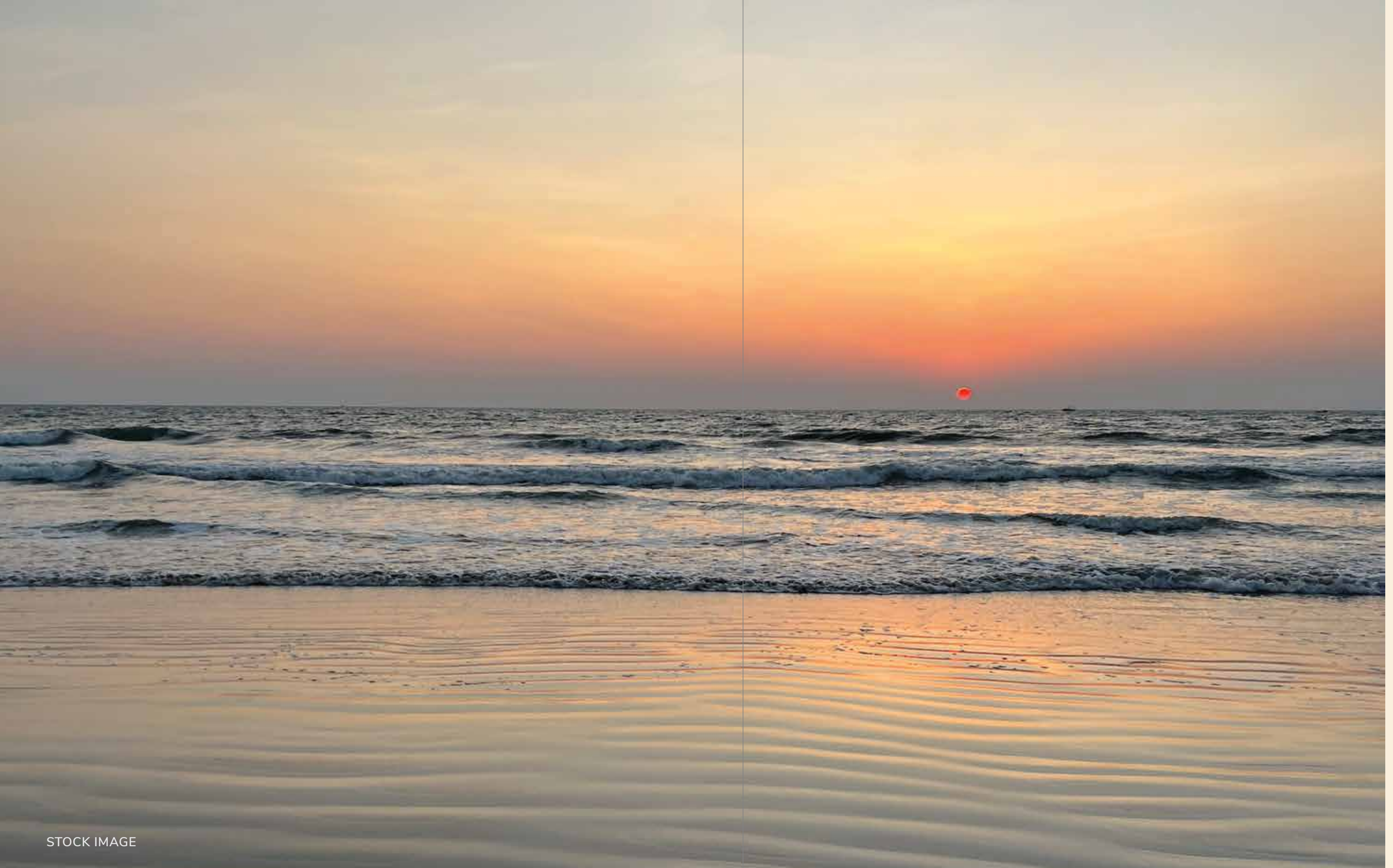


 H.RISHABRAJ  
**BLUE LOTUS**  
KHAR [W]



STOCK IMAGE

Life as vibrant as  
the lush greenery that envelop you...

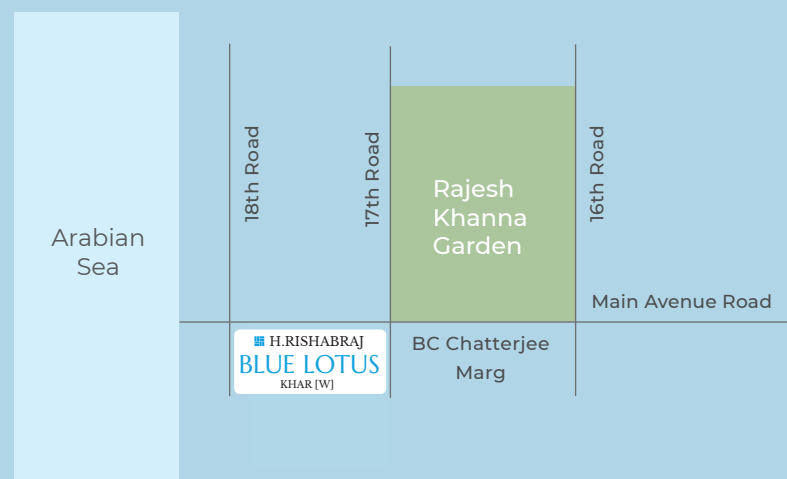


STOCK IMAGE

Spaces as expansive as  
the serene seas that surround you...

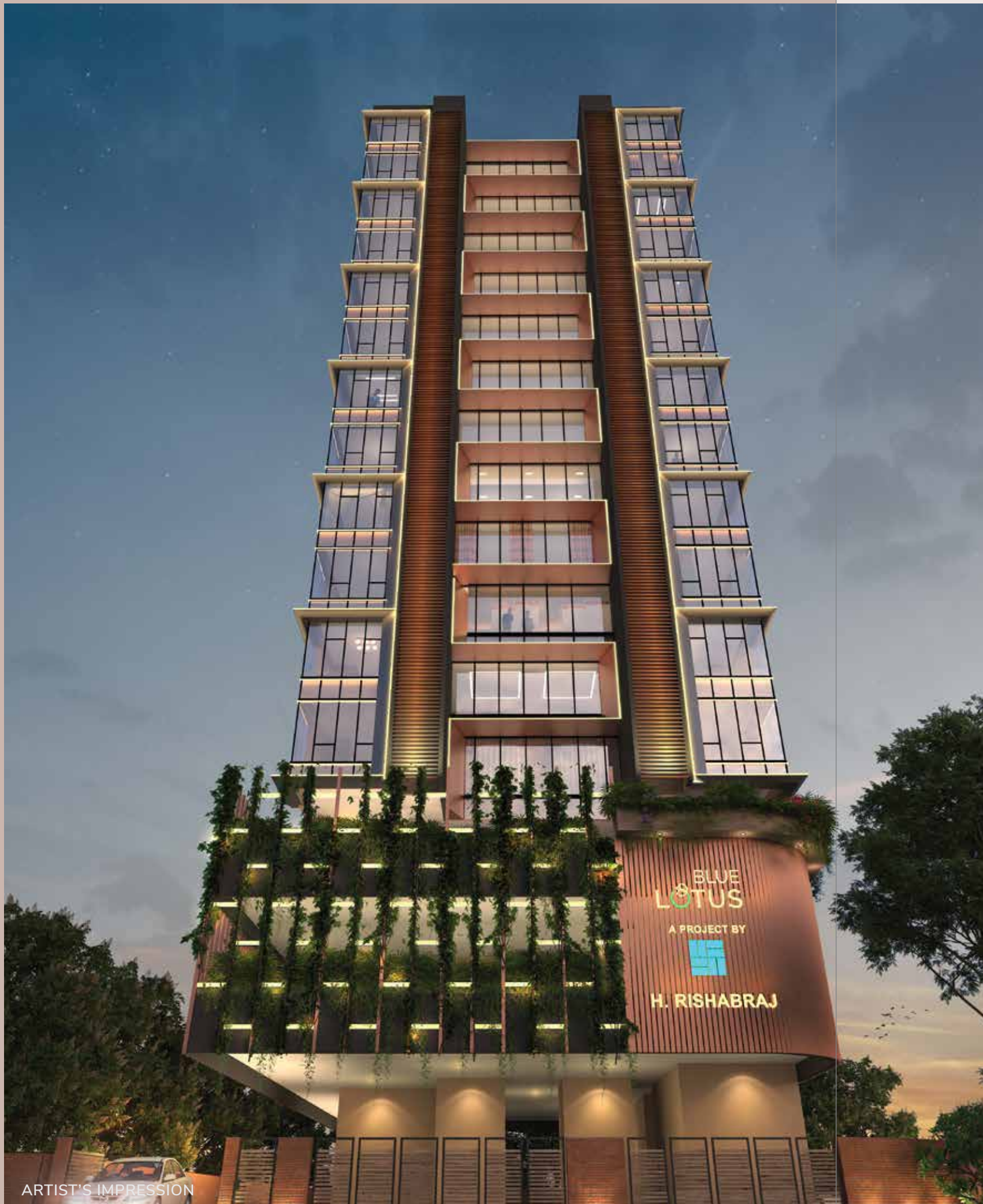
## Experience the Extraordinary

Being the best address in the midst of amazing environs in the heart of the city, Blue lotus revels in the glamour and eminence of being in the spotlight. With a premium-ness that comes with scaling one of the most revered suburbs like Khar, it is a domicile laced with élan for the most vivacious performance called life. Ablaze with a flamboyance that makes heads turn. A penchant for panache that makes the regular feel mundane. And with close proximity to the Rajesh Khanna garden and a luxurious view of the Arabian Sea from the upper floors, the locale in and around the project makes it the most sought after space to own.



Map is not to scale





ARTIST'S IMPRESSION

## Where the land meets the sky...

A statement unlike any other. A spectacle too grand to behold.  
An existence made more surreal...

Raise the roof for a lifestyle statement that takes honour in being unsurpassed, when it comes to being the pinnacle of exclusivity and class. Where spacious and smartly equipped 2 & 3 BHK homes come with lofty offerings like beautiful views of the azure seas and verdant views of the affluent city and ever effervescing Rajesh Khanna Park.

Where dual views of blue and green make a play on your heartstrings and senses. And luxuriant living weaves a new thread of refinement into your very being. Where lo and behold, you hold the keys to a paradise decked and dressed in regal flair. Wherein you take the reins and charter yourself into the rising dawn of enamoured elegance and finessed living.



ARTIST'S IMPRESSION

## A world within. A world apart

Blue Lotus redefines the view for living life king size. The finesse of detailing and care in the design is focussed to fashion an extraordinary residential experience offering comfort, luxury and an epic quality of life. Abundant in every sense, enjoy a smooth living experience replete with luxuries like premium well-attuned parking spaces that welcome you home in style.

All this and much more awaits you at BLUE LOTUS...



ARTIST'S IMPRESSION

## Gateway to grandeur

Where every space is designed to enchant you with a long and lasting impression, the entrance foyer enjoys the prime privilege of being your glorious window to the world of abundance within. With a well furnished and elegant lobby, you come to ample room for you to stretch your imagination, push your limits and aim however lofty your dreams wish to take you...



STOCK IMAGE

Scripting liveable dreams  
and unforgettable memories...



MAIN AVENUE ROAD

17TH ROAD



FLAT NO	TYPE	RERA CARPET AREA
1	3 BHK	1084 SQ.FT.
2	2 BHK	749 SQ.FT.
3	2 BHK	749 SQ.FT.



ARTIST'S IMPRESSION

## One home, endless luxuries

Discover the route to perpetual bliss with world class amenities at the heart of the city. With contemporary facilities that cater to and comfort your every need and desire, get ready to be lured in and free fall into a land of exquisite indulgence and wonder...

### INTERNAL AMENITIES

Vitrified flooring in entire flat.

Colour anodized Aluminium sliding windows with tinted glass and marble frame.

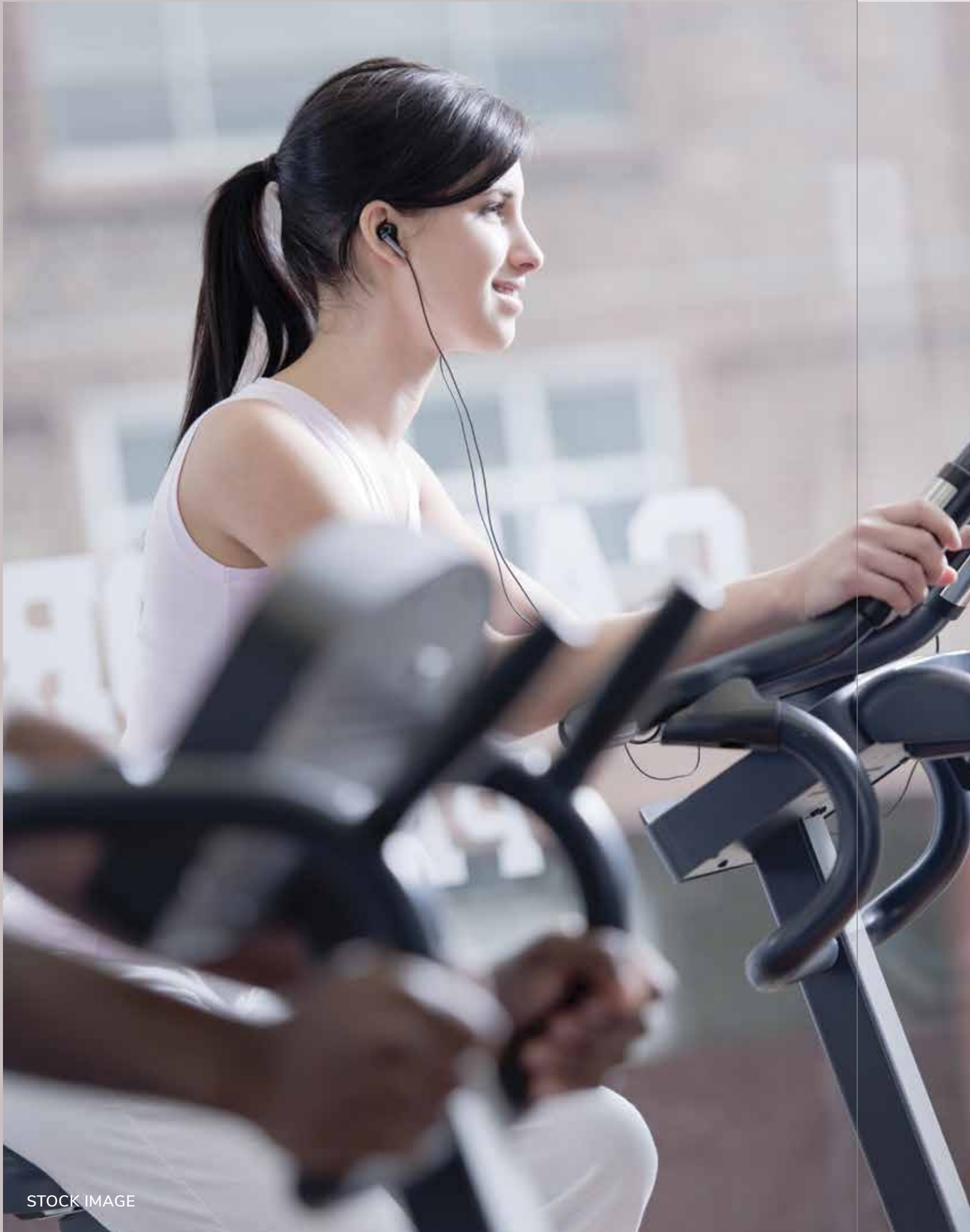
Modular Kitchen

Granite double kitchen platform with Stainless steel sink.

Concealed copper wiring with Goldmedal switches and accessories with E.L.C.B.

Designer bathroom with anti skid ceramic tile flooring.

Concealed plumbing with superior quality sanitaryware and Jaquar fittings or any similar brand.



STOCK IMAGE

## Life at its very best...

At Blue Lotus, we take care that you have the best of everything that life has to offer. With our spacious and well equipped gymnasium, you can now not only stay in good shape but sleep better, look better and feel better as well. Lose yourself in the serenity of a secure home for you and your loved ones, with our well-placed top of the range security features like CCTV cameras & intercoms.



STOCK IMAGE



STOCK IMAGE



ARTIST'S IMPRESSION

## Whole & sole way to live

Welcome to a habitat filled with enchantment and unforgettable moments. Journey into your imagination and live the fairytale life. Stroll through the beautifully landscaped rooftop garden and paved pathways, bearer of unobstructed Ocean and city views. Embrace undiluted downtime and experience the Zen of it all. Dive deep and explore an affluent vista of life with radiant recreational spaces that give you a holistic appreciation for wellness of the mind and soul.

## Other Projects



**52 PARK AVENUE - Khar W**  
MahaRera No. P51800032136



**RISHABRAJ SAMAJ DARSHAN - Kandivali W**  
MahaRera No. P51800010479



**RISHABRAJ PARKVISTAS - Borivali W**  
MahaRera No. P51800033442



**63 GOLD MEDAL AVENUE - Goregaon W**  
MahaRera No. P51800027330



# H. RISHABRAJ

ENERGIZING HAPPINESS!

www.hrishabraj.com

Trust, quality, customer satisfaction, and goodwill are values that are today synonymous with the Rishabraj brand. With Mr. Harrishkumar Jain at the helm of the company, the group has succeeded in translating millions of wishes into reality. The earnest dedication and rising momentum of the company has resulted in the group setting new yardsticks in the redevelopment niche. With glowing testimonials from 1000 + ecstatic families spread over 1 million sq.ft of premium living space happily under its belt, the Group continues to carry forward its never ending passion for excellence with 1.5+ million sq. ft under various stages of planning & construction.



# LETS RESTART

COMMITMENTS UNCOMPROMISED

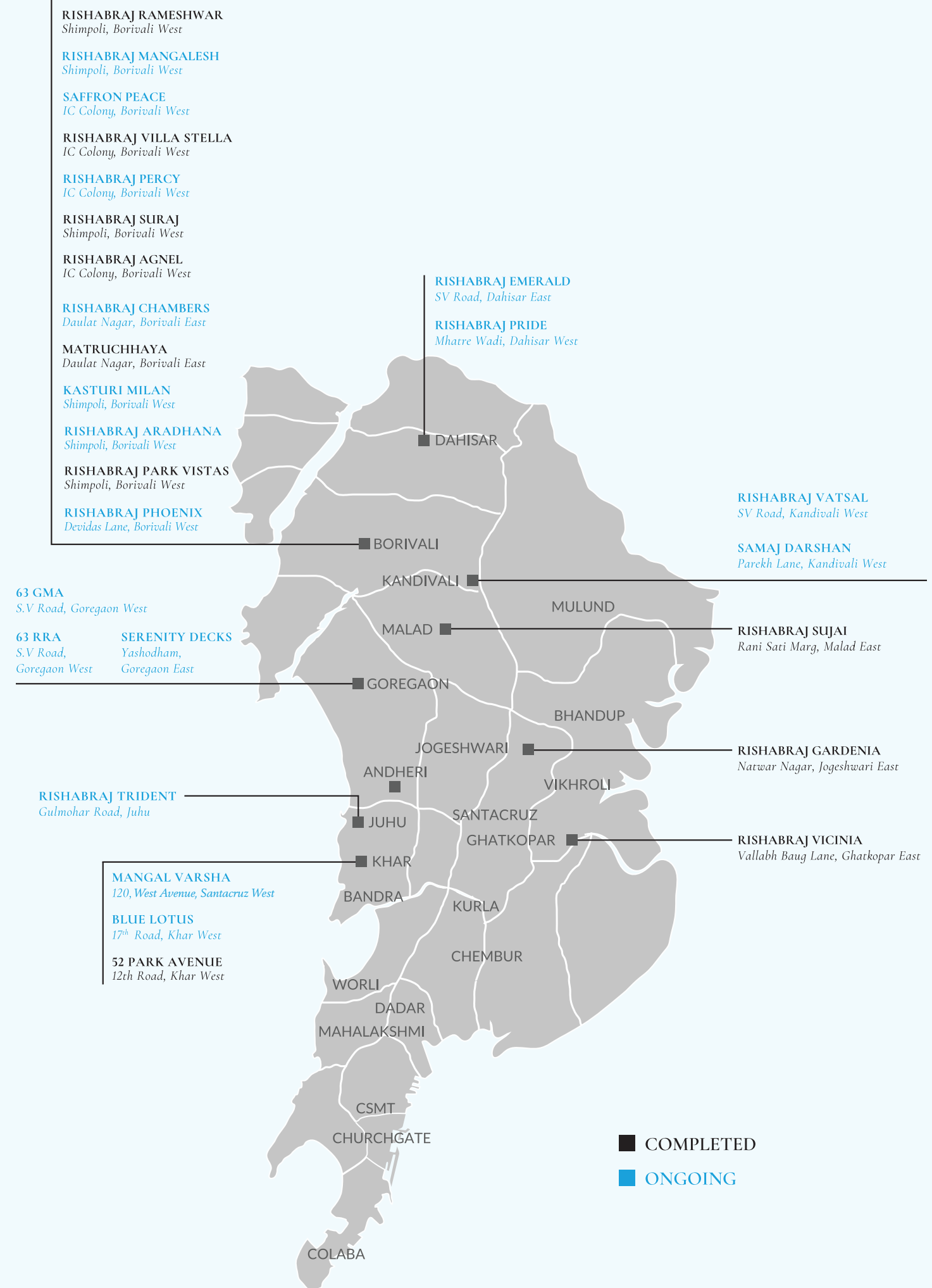
AN INITIATIVE BY H.RISHABRAJ GROUP

www.letrestart.com

In the city of Mumbai most projects are in dire need of revamping or construction work on booked projects is stalled. This shatters the precious dream of millions who wish to live the ultimate life in this city of dreams.

Is there no respite in sight for such scenarios? Is there a possibility of a saviour emerging from the very belly of this magnificent city to help fix this huge problem? Well, the answer is a resounding Yes!

The innovative genius of H Rishabraj gave birth to a revolutionary brand in the year 2020. We are Let's Restart and Welcome to the ultimate solution provider for delayed construction projects.



A Project by



**H. RISHABRAJ**

ENERGIZING HAPPINESS!

Developers : **RISHABRAJ ESTATE DEVELOPERS PVT. LTD.**

Corporate Address : 103, Jai Tirth, Daulat Nagar, Road No. 10,  
Borivali (East), Mumbai - 400066 Ph : 022 2893 4545 | 2893 4747

Sales : 8989 72 4545 / 8989 73 4545

E : sales@hrishabraj.com W : www.hrishabraj.com

---

Site Address : Blue Lotus, 17th Road, Khar West, Mumbai - 400 052

---

A Proud Member of



MahaRera number : P51800033826 (<https://maharera.mahaonline.gov.in>)

Disclaimer : The plans, specifications, images and other details herein are only indicative and the developer's reserve their rights to change any of all of these in the interest of the development. This printed material does not constitute an offer and or contract any type between the developer and the recipient. Any purchase of this development shall be governed by the terms and conditions of the agreement for sale/ lease entered into between parties and no detail mentioned in this printed material shall in any way govern such transaction.